

# ANNUAL REPORT 2021-2022

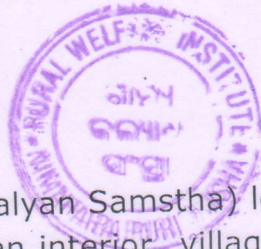


## RURAL WELFARE INSTITUTE (Gramya Kalyan Samstha)

At. Hansapada, PO. Chanarapada, PS. Nimapada,  
Dist. Puri, Odisha (India)

Mob: 8763309852/ 7978087996

E mail: [rwinimapada79@gmail.com](mailto:rwinimapada79@gmail.com)



## INTRODUCTION :

Rural Welfare Institute (Gramya Kalyan Samstha) locally known as RWI was established on 12<sup>th</sup> May 1979 at an interior village Hansapara of Nimapara block in Puri district in Odisha (I) having 30 members from different villages. During this period, RWI has expanded its social services to different blocks and districts in Odisha. It is working in the areas of Social & Financial inclusion, Institutional promotion, Education, Governance, Women & Child development, Disaster Management, Sanitation, Environment development, Health, Insurance, Livelihood, skill training, Awareness Generation and handicraft promotion.

## LEGAL STATUS : RWI is registered under:

- i) Indian Societies Registration Act. 1860 on 3<sup>rd</sup> March 1984
- ii) Foreign Contribution Regulation Act. 1976. on 21<sup>st</sup> January 1986
- iii) Income Tax Act, 1961 12 (A) on 6<sup>th</sup> March 1993.
- iv) 80G DIN & Order No: ITBA/EXM/S/80G/2020-21/1028126529(1)  
Dt.01.10.2020
- v) TAN on 13<sup>th</sup> January 2015
- vi) PAN, No. AAAAR1805R
- vii) NITI AYO:VO/NGO Unique ID: OR/2016/0104446. on  
dt.26/10/2016
- viii) MCA Regn. No. CSR00010060

## VISION :

Socio-economic empowerment of the down trodden people in Odisha.

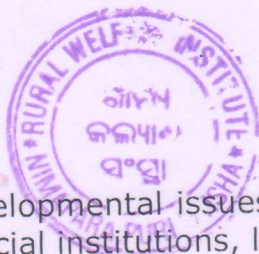
## MISSION :

To enable the vulnerable families in Odisha to have sustainable self employment opportunity as well as to maintain self dignity in the society by 2030.

## OBJECTIVES :

- To organize & aware the community to access their rights and entitlements.
- To provide opportunity to the unemployed youth for multi-dimensional capacity building.

*Parabolan Kuan Wanda*

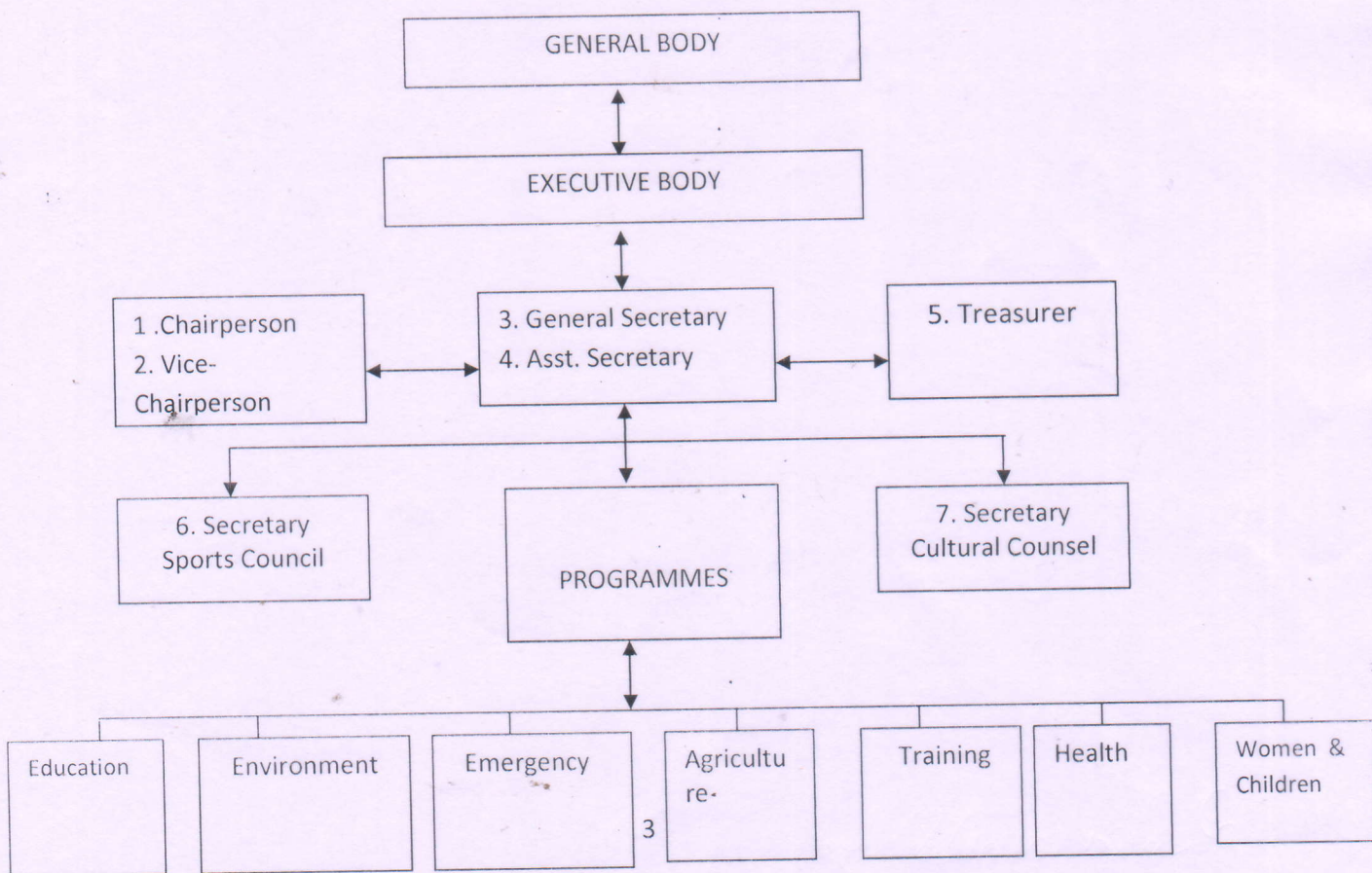


- To address different developmental issues and liaison with govt., non- govt. departments, financial institutions, local governance.
- To deal with emergencies through community based organizations of vulnerable area.

### STRATEGY :

Basically RWI depends upon the community before implementation of any programme. It adopts study, training & development at different level, to fulfill the need and objective of the programme. It facilitates issue based programme at grass root level by engaging volunteers of the locality. Also it emphasizes on concept clarity and maintains transparency in the community by people's organization and Community Based Organizations. High level management information system (MIS) is adopted for fast transfer of information, knowledge and skill from the organization to the grass root level as well as to other govt. & non- govt. institutions and vice-versa. This together, helps cumulatively to come closer to the beneficiary, identify their problems and build their capacity to search suitable solutions. Strategically, it positions itself to encourage people in taking decisions to their own affairs including their own organization and institutions.

### ORGANISATION STRUCTURE





## HUMAN RESOURCE

### A. STAFF

Office			Field			Grand Total		
Male	Female	Total	Male	Female	Total	Male	Female	Total
1	2	3	3	3	6	4	5	9

### B. VOLUNTEERS

Male	Female	Total
8	22	30

### C. MEMBERS

Total SC	SC Male	SC Female	Total OBC	OBC Male	OBC Female	Total GC	GC Male	GC Female	Total Male	Total Female	Grand Total
5	2	3	15	7	8	10	5	5	14	16	30

### Past Activities :

Since it's inception RWI has moved with lot of activities till now i.e. eye camp, dental camps, sterilization camp, immunization camp, Central Rural Sanitation Project, para-legal training camps, plantation, agriculture development, Balwadi program, women development project, Non Formal Education project, Disaster mitigation program, Super cyclone relief and rehabilitation program, Public health and hygiene project, Oxfam Odisha Livelihood Employment Restoration Program (OOLERP), Child labour prevention centre (CLPC) DW CRA, Women SHG promotion, Women Empowerment Through Self Help (WETSH) project, Bamboo Regeneration activity, Flood relief program, street play for awareness, Model village sanitation program, Cash for work under flood relief program, Women Empowerment through Institutional Growth and Equity (WEIGE), Computer training for youth. Community Based Disaster Risk Reduction Management (CBDRM) Project. Sanitation intervention in Puri Project, Line transplantation program under RKVY, Skill development for Panchayatiraj Institution members of Astaranga Block, Just Governance, Sustain livelihood program, Akshya India Tb project, Formation and promotion of Joint Liability Groups (JLG), Business Facilitation by SBI. State level Seminar on problem related to Early Childhood Care Education Policy, Implementing and Evaluating Low Cost Interventions to Improve Latrine Use project, Skill



development of farmers under Project Atal, FANI Cyclone-2019 relief supported to 3000 school children under Child Friendly Space(CFS)project- School bag, learning material, Solar lamp, sports materials & joyful learning from 6months with GP level child fair, food, tarpoline solar lamp, cloth for 300 House Holds with Medicines through 3 Health camps, 300 House Hold are supplied Tarplin Solar lamp, 150 hh are provided mosquito net etc.

The above activities were done by the assistance of following donor agencies i.e. CDMO Puri, CAPART, CEBEMO Netherlands, Oxfam, Unicef, NABARD, Cord Aid Netherlands, diakonia, XIMB, Concern World Wide, Wateraid, SIRD Govt. of Odisha, Dy Director Agriculture, NYK Puri, CWS Hyderabad, Lepira Society BBSR, National University of Education and Public Administration New Delhi, Emory University USA, Centurion University Bhubaneswar, Aide et Action, Smile Foundation, worise foundation, APPI, SOCH, National Agro Foundation Chennai.

### **Present activities :**

This year RWI has executed sector based activities in different areas in Odisha.

#### **1. Education**

##### **i) Letter Crossing Program**

We have organized a **letter crossing** program based on building friendship between India and Germany, supported by Mandelzweig Germany from January 2022 to December 2022.

##### **Aim of the program**

- Correspondence with German students.
- Writing letter to another country.
- Promoting intercultural dialogue.
- Strengthening English skills.



It is to create letter writing knowledge in English and make friendship with Germany school children visa-verse. Also we organized awareness motivation, orientation among these students to learn letter writing process, exchange of social-culture activities etc. at

following 6 Schools i.e. 1. Sri Arobinda Purnanga Sikshya Kendra,



Seulasahi, Nimapada, 2. Maa Bhuasuni High School, Hantasura, Gop, 3. Erabanga High School, Gop in Puri district & 4. Kendriya Vidyalaya No.-1, Bhubaneswar, 5. Baxi Jagabandhu English Medium School - II, Satyabhamapur and 6. ODM Public School, Bhubaneswar in khurdha district. We selected 250 students from 7<sup>th</sup> to 9<sup>th</sup> class of above schools and formed groups like Butterfly, Konark, Gopabandhu, Gandhiji etc. for correspondence. There are 4 times correspondences by post organized this year.

### **Impact**

- Last year 4 schools are covered under this program. As per the result the donor agency became over pleased and extended to cover another 2 schools i.e. Erabanga High School, Gop & ODM Public School, Bhubaneswar.
- Letter writing capacity in English of these students is improved.
- Our students have mentioned about Car festival, Ganesh Puja, Durga puja, Dewali, Holi Festival etc. in their letter. Similarly Germany students mentioned Easter, Christmas, tree & Santaclaus, Good Friday etc.

### **ii) Together for Protection**

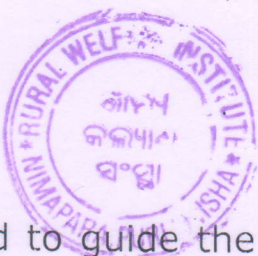


This is a small initiative of Mandelzweig Germany to protect school students from COVID-19. We distributed masks & make the students be aware on use of mask, Maintain distance each other & regular hand wash practice among 400 students at Erabanga High School, Gop in Puri district.

### **iii) Playground Building**

There was a need to develop community playground At Sri Arobinda Purnanga Sikshya Kendra, Seulasahi Nimapada for community children. Mandelzweig has supported it for the betterment of poor community children. Different type of playing materials are procured and installed there. A community

*Handwritten signature*



volunteer is also engaged to guide the children and take care of playing equipment. The community people particularly women are highly pleased to see their child in modern playing instruments. They are highly obliged to Mandelzweig Germany as well as RWI. It is observed that the community children got opportunity to play regularly, maintained physical & mental growth and attracted to attend school sincerely.



### **Sports Program**

Mandelzweig has provided sports dress (Jersey) for girl students at least 100 per school to following three schools along with football & net for practicing football game regularly. It helped to girl students became smart and sincere on running, learning the laws of game etc. at Sri Arobinda Purnanga Sikshya Kendra, Seulasahi Nimapada, Maa Bhuasuni High School, Hantasura, Erabanga High School, Gop in Puri district.

## **2. Environment**

### **i) Plantation**



This year RWI has collected 250 no. of various quick growth tree plants and distributed among 100 no of families at Juanlo village in Nimapada block.

### **ii) Ponds cleaning**

Earlier we developed 20 no of community ponds at 5 Gram Panchayat in Nimapada block which are managed by concerned village committee and SHG. This year we motivated them to clean the ponds and manage pisci-culture from their own funds.



7 *Prabhat Kumar Nayak*

General Secretary  
Rural Welfare Institute



### iii) Use of Toilets

The Govt. of India has supported poor families for construction of toilet under Swachha Varat Mision (SVM). But many people are habituated with open defecation at road sides. Keeping in it view RWI has engaged it's volunteers, motivated community people to use toilet and stop open defecation.

### 3. Emergency

Earlier RWI has promoted 50 no of Traditional Birth Attendants (TBA) in flood affected GPs. They have done tremendous job before delivery. Recently they have transferred their knowledge and experience to new young generation. They used emergene ambulance No.102, co-operated ASHA, AWW and referred nearby hospitals for safe delivery.

Also RWI encouraged to existing Village Level Disaster Risk Reduction Committee (VLDRRC) members to alert before flood and cyclone situation.

### 4. Agriculture

This year our volunteers consulted with trained farmers under PMKVY for ideal vegetable cultivation in Gop block and linked them with different reputed marketing agencies. RWI has been cultivating paddy, green gram on its own & share land. Also pisciculture is continuing in it's two ponds.

### 5. Training

RWI has conducted training on veg.cultivation at Juanlo to 30 women SHG members basically it focused on plant protection during rain & flood, use of pesticide, fruit preservation and marketing. Also RWI organized a five-day orientation on making of worship garments on 26<sup>th</sup> to 30<sup>th</sup> January 2022 there were 20 no of girls participated and contributed.

*Ram Shankar Panda*



## **6. Health**

A two day Yoga and naturopathy conducted at Hansapada on 24<sup>th</sup> & 25<sup>th</sup> June 2021 where 20 no of youth participated.

## **7. Women**

Recently, the Govt. is given emphasis on formation and promotion of producer groups among women SHG members. RWI has consulted with personnel of ORMAS Puri and organized a district level selected NGOs meet on 9<sup>th</sup> February 2022 at Hansapada. A virtual consultation speech talked by Sri Prasant Kumar Dash ORMAS on funding opportunity and marketing facilities to women producer groups. Accordingly all the NGO have decided to form women PG.

## **8. Cultural program**

A cultural program among the community girls of Hansapada is organized on 14<sup>th</sup> November 2021 for celebrating Children's Day.

## **Others**

RWI has initiated to apply proposals to Ministry of Road Transport and highways through SMD New Delhi. Ministry of Corporate Affairs Govt. India New Delhi, Mandelzweig Germany etc.

## **Conclusion**

This year provided us an opportunity to plan and progress on different social service activities to the poor people in this area.

General Secretary  
Rural Welfare Institute

